



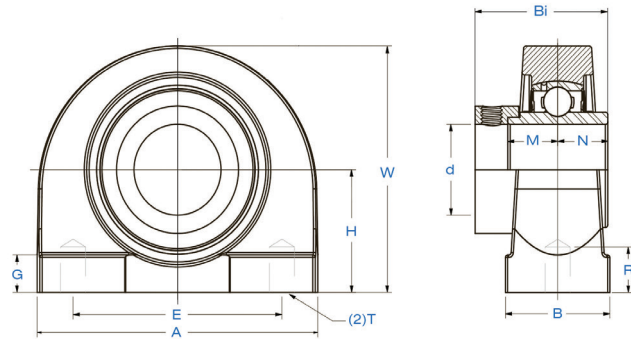
# SHCSPAM 200

Normal-Duty Tapped-Base Pillow Block  
Wide Inner Ring  
Eccentric Lock

Seal  
Styles



Permanent  
Lubrication



Bearing Number	Shaft Dia.	Dimensions in. mm.										Thread Size (T)	Load Rating lbs. kN.		Bearing Insert	Housing Number	Wt.
	d in. mm.	H	A	E	B	R	G	W	Bi	N	M	in. mm.	Dynamic Cr	Static Cor			lbs. kg.
SHCSPAM 204-12L4L	3/4	1.313	2.88	2.000	1.50	0.50	0.44	2.56	1.7205	0.6732	0.6732	3/8-16	2,331	1,142	SHC 204-12	SPAM 204	1.7
SHCSPAM 204L4L	20	33.3	73.0	50.8	38.0	12.7	11.0	65.0	43.7	17.1	17.1		10.37	5.08	SHC 204		0.8
SHCSPAM 205-14L4L	7/8														SHC 205-14	SPAM 205	
SHCSPAM 205-15L4L	15/16	1.438	3.00	2.000	1.50	0.50	0.47	2.80	1.7480	0.6890	0.6850	3/8-16	2,542	1,349	SHC 205-15		2.1
SHCSPAM 205L4L	25	36.5	76.0	50.8	38.0	12.7	12.0	71.0	44.4	17.5	17.4		11.31	6.00	SHC 205		1.0
SHCSPAM 205-16L4L	1														SHC 205-16		
SHCSPAM 206-17L4L	1 1/16														SHC 206-17	SPAM 206	
SHCSPAM 206-18L4L	1 1/8														SHC 206-18		
SHCSPAM 206L4L	30	1.688	4.00	3.000	1.50	0.63	0.47	3.43	1.9055	0.7205	0.7165	7/16-14	3,554	1,942	SHC 206		3.2
SHCSPAM 206-19L4L	1 3/16	42.9	102.0	76.2	38.0	16.0	12.0	87.0	48.4	18.3	18.2		15.81	8.64	SHC 206-19		1.5
SHCSPAM 206-20L4L	1 1/4														SHC 206-20		
SHCSPAM 207-20L4L	1 1/4														SHC 207-20	SPAM 207	
SHCSPAM 207-21L4L	1 5/16														SHC 207-21		
SHCSPAM 207-22L4L	1 3/8	1.875	4.25	3.250	1.89	0.75	0.47	3.74	2.0118	0.7402	0.7402	1/2-13	4,683	2,626	SHC 207-22		4.3
SHCSPAM 207L4L	35	47.6	108.0	82.6	48.0	19.0	12.0	95.0	51.1	18.8	18.8		20.83	11.68	SHC 207		2.0
SHCSPAM 207-23L4L	1 7/16														SHC 207-23		
SHCSPAM 208-24L4L	1 1/2														SHC 208-24	SPAM 208	
SHCSPAM 208-25L4L	1 9/16	1.938	4.63	3.500	1.89	0.75	0.47	3.94	2.2165	0.8425	0.8425	1/2-13	5,294	3,057	SHC 208-25		5.4
SHCSPAM 208L4L	40	49.2	117.0	88.9	48.0	19.0	12.0	100.0	56.3	21.4	21.4		23.55	13.60	SHC 208		2.5
SHCSPAM 209-26L4L	1 5/8														SHC 209-26	SPAM 209	
SHCSPAM 209-27L4L	1 11/16	2.125	4.96	3.750	2.00	0.75	0.47	4.25	2.2165	0.8425	0.8425	1/2-13	5,923	3,507	SHC 209-27		6.4
SHCSPAM 209-28L4L	1 3/4	54.0	126.0	95.3	51.0	19.0	12.0	108.0	56.3	21.4	21.4		26.35	15.60	SHC 209-28		2.9
SHCSPAM 209L4L	45														SHC 209		
SHCSPAM 210-30L4L	1 7/8														SHC 210-30	SPAM 210	
SHCSPAM 210-31L4L	1 15/16	2.250	5.50	4.000	2.00	0.87	0.55	4.61	2.4685	0.9685	0.9685	5/8-11	6,402	4,046	SHC 210-31		7.5
SHCSPAM 210L4L	50	57.2	140.0	101.6	51.0	22.0	14.0	117.0	62.7	24.6	24.6		28.48	18.00	SHC 210		3.4
SHCSPAM 210-32L4L	2														SHC 210-32		

 LUBRILIFE™

 MARINER®