

SHCSHAM 200

Normal-Duty Hanger Bearing Unit
Wide Inner Ring
Eccentric Lock

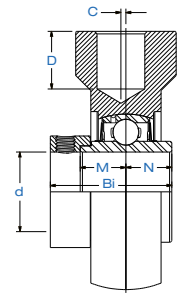
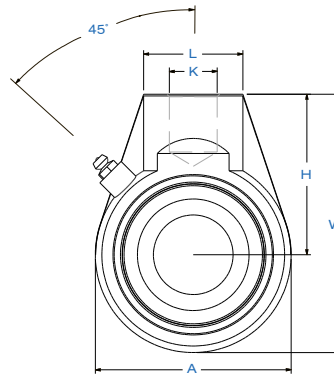
Seal
Styles



Standard Seal
with Flinger



Triple-Lip
L3 Seal



Bearing Number	Shaft Dia.	Dimensions in. mm.										Load Rating lbs. kN.		Bearing Insert	Housing Number	Wt.
	d in. mm.	A	W	C	H	L	D	K	Bi	N	M	Dynamic Cr	Static Cor			lbs. kg.
SHCSHAM 204-12	3/4	2.52	3.78	0.00	2.52	1.57	0.75	PF 3/4	1.7205	0.6732	0.6732	2,331	1,142	SHC 204-12	SHAM 204	2.0
SHCSHAM 204	20	64.0	96.0	0.0	64.0	40.0	19.0		43.7	17.1	17.1	10.37	5.08	SHC 204		0.9
SHCSHAM 205-14	7/8	3.07	4.06	0.00	2.52	1.57	0.75	PF 3/4	1.7480	0.6890	0.6850	2,542	1,349	SHC 205-14	SHAM 205	2.2 1.0
SHCSHAM 205-15	15/16													SHC 205-15		
SHCSHAM 205	25													SHC 205		
SHCSHAM 205-16	1													SHC 205-16		
SHCSHAM 206-17	1 1/16	3.07	4.06	0.00	2.52	1.57	0.75	PF 3/4	1.9055	0.7205	0.7165	3,554	1,942	SHC 206-17	SHAM 206	2.3 1.1
SHCSHAM 206-18	1 1/8													SHC 206-18		
SHCSHAM 206	30													SHC 206		
SHCSHAM 206-19	1 3/16													SHC 206-19		
SHCSHAM 206-20	1 1/4													SHC 206-20		
SHCSHAM 207-20	1 1/4	3.62	4.57	0.00	2.76	1.57	0.75	PF 3/4	2.0118	0.7402	0.7402	4,683	2,626	SHC 207-20	SHAM 207	2.9 1.3
SHCSHAM 207-21	1 5/16													SHC 207-21		
SHCSHAM 207-22	1 3/8													SHC 207-22		
SHCSHAM 207	35													SHC 207		
SHCSHAM 207-23	1 7/16													SHC 207-23		
SHCSHAM 208-24	1 1/2	3.78	4.76	0.08	2.87	1.57	0.75	PF 3/4	2.2165	0.8425	0.8425	5,294	3,057	SHC 208-24	SHAM 208	3.6 1.6
SHCSHAM 208-25	1 9/16													SHC 208-25		
SHCSHAM 208	40													SHC 208		
SHCSHAM 209-26	1 5/8	4.25	5.35	0.20	3.23	1.89	0.83	PF1	2.2165	0.8425	0.8425	5,923	3,507	SHC 209-26	SHAM 209	4.2 1.9
SHCSHAM 209-27	1 11/16													SHC 209-27		
SHCSHAM 209-28	1 3/4													SHC 209-28		
SHCSHAM 209	45													SHC 209		
SHCSHAM 210-30	1 7/8	4.65	5.59	0.20	3.27	1.89	0.83	PF1	2.485	0.9685	0.9685	6,402	4,046	SHC 210-30	SHAM 210	4.8 2.2
SHCSHAM 210-31	1 15/16													SHC 210-31		
SHCSHAM 210	50													SHC 210		
SHCSHAM 210-32	2													SHC 210-32		
SHCSHAM 211-32	2	4.96	6.22	0.28	3.74	2.36	0.98	PF1 1/4	2.8110	1.0945	1.0906	7,931	5,036	SHC 211-32	SHAM 211	7.6 3.4
SHCSHAM 211-34	2 1/8													SHC 211-34		
SHCSHAM 211	55													SHC 211		
SHCSHAM 211-35	2 3/16													SHC 211-35		
SHCSHAM 212-36	2 1/4	5.59	6.81	0.35	4.02	2.36	1.10	PF1 1/4	3.0630	1.2205	1.2165	9,554	5,921	SHC 212-36	SHAM 212	8.6 3.9
SHCSHAM 212	60													SHC 212		
SHCSHAM 212-38	2 3/8													SHC 212-38		
SHCSHAM 212-39	2 7/16													SHC 212-39		

MARINER®